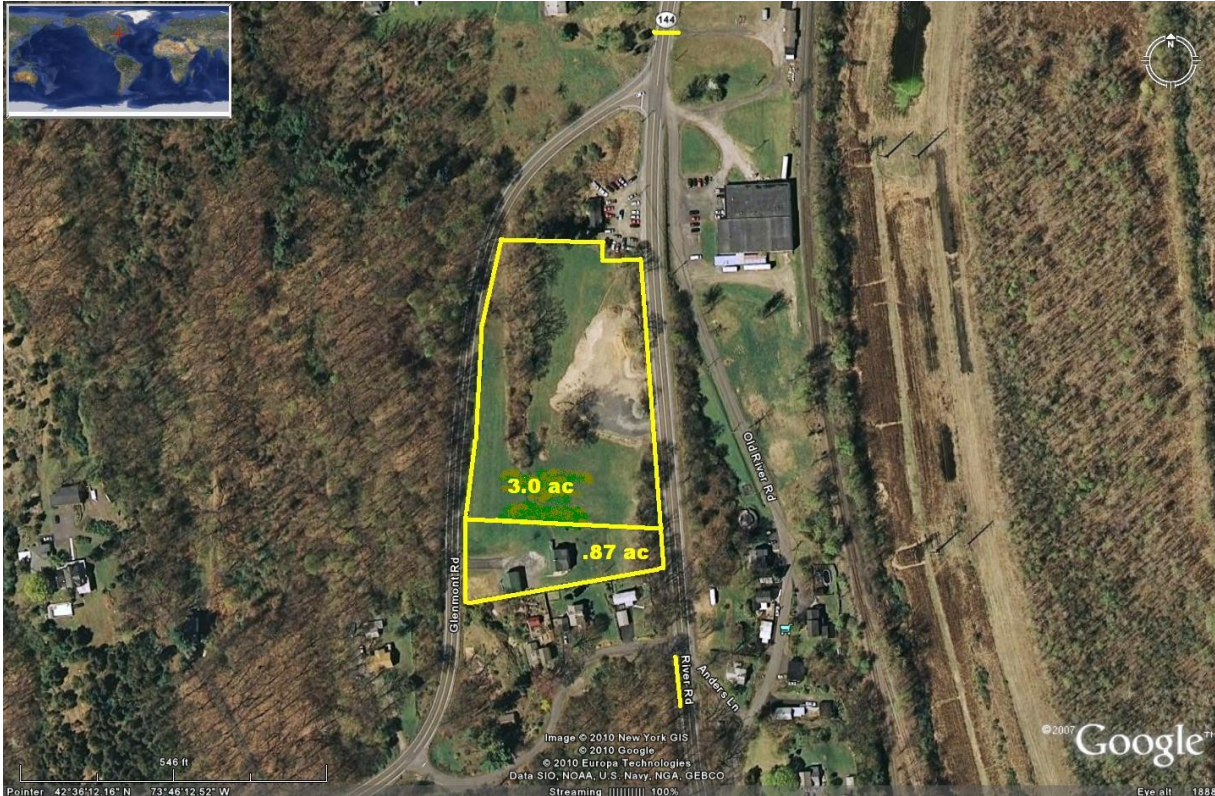


For Sale \$249,000

(Residential MLS# 201032227)

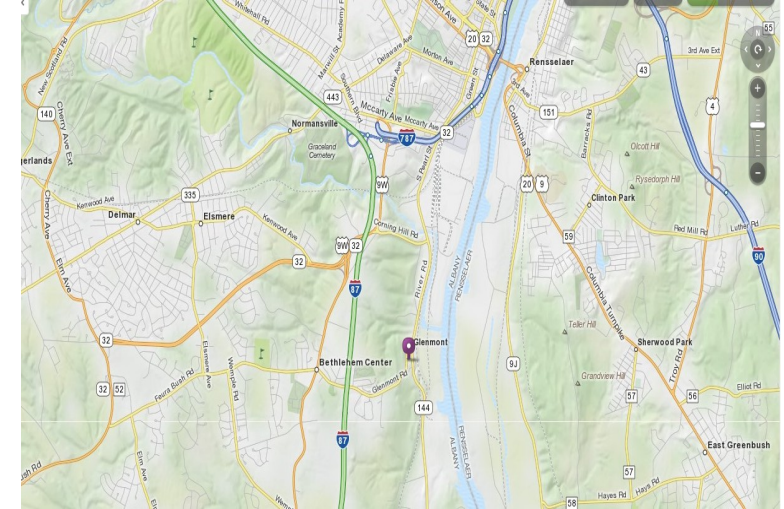
82 Glenmont Rd, Glenmont, NY 12077
Town of Bethlehem (CIRES MLS# 201100635)

-LAND- 3 acres in a RLI (Rural Light Industrial) Zone



Parcel Features

- 3 acres contiguous land
- AADT 9,000 Traffic Count
- Water at the road
- Access from both Glenmont Rd & River Rd
- Many Commercial uses allowed



Directions: From Albany exit 2, I-787 go south on (South Pearl St-Rte 32/ River Rd-Rte 144) 2 miles. Property fronts both River Rd and Glenmont Rd. Yellow house and barn at top of hill along with the vacant land.

Possible Uses: Many Commercial - Multi-Family, Auto, Truck or Heavy Equipment Repair or Sales, Contractors, Day Care, Business Office, Retail, C-Store, Animal Clinic, Medical Wellness Center and many more. Clean fill dumping is allowed.

NAI Platform

Commercial Real Estate Services, Worldwide.

No warranty, express or implied, is made as to the accuracy of the information contained herein. This information is submitted subject to errors, omissions, change of price, rental or other conditions, withdrawal without notice, and is subject to any special listing conditions imposed by our principals. Cooperating brokers, buyers, tenants and other parties who receive this document should not rely on it, but should use it as a starting point of analysis, and should independently confirm the accuracy of the information contained herein through a due diligence review of the books, records, files and documents that constitute reliable sources of the information described herein.

Call listing broker for details

Please Contact:

Jim Harder Ext 221
jharder@naiplatform.com

Dan Slote Ext 213
dslote@naiplatform.com

Tyler Culberson Ext 228
tculberson@naiplatform.com

14 Corporate Woods Blvd
Albany, NY 12211
tel 518 465 1400
fax 518 465 1441

www.NAIPlatform.com